

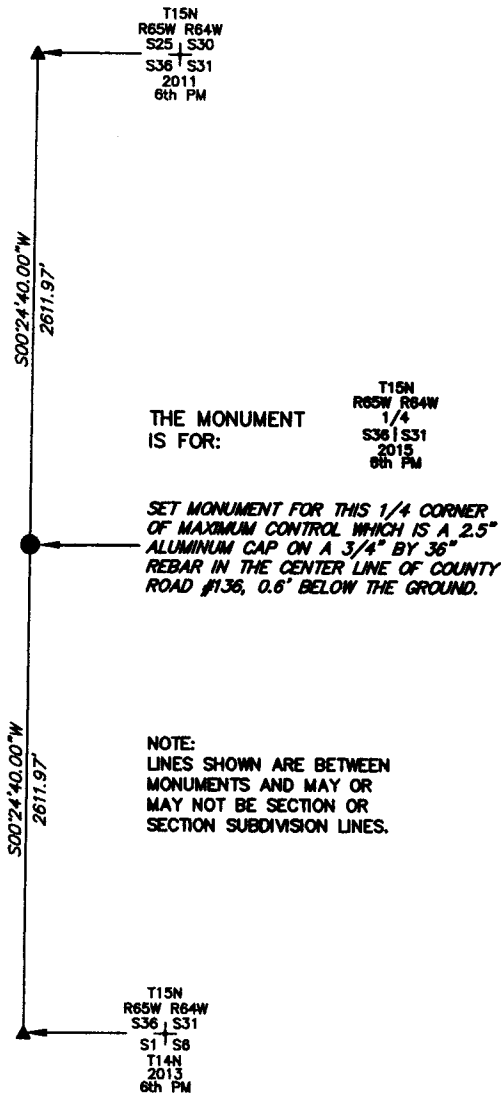
State of Wyoming Corner Record

CORNER PERPETUATION AND FILING ACT.

Regulations of the Board of Registration for Professional Engineers and Land Surveyors.)

Reverse side of this form may be used if more space is needed.

Record of original survey and citation of source of historic information (if corner is lost or obliterated). Description of corner monumentation evidence found and/or monument and accessories established to perpetuate the location of this corner. Sketch of relative location of monument, accessories, and reference points with course and distance to adjacent corner(s) (if determined in this survey). Method and rationale for reestablishment of lost or obliterated corner.

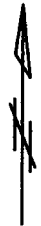


THE MONUMENT IS FOR:

T15N
R65W R64W
1/4
S36 | S31
2015
6th PM

SET MONUMENT FOR THIS 1/4 CORNER OF MAXIMUM CONTROL WHICH IS A 2.5" ALUMINUM CAP ON A 3/4" BY 36" REBAR IN THE CENTER LINE OF COUNTY ROAD #136, 0.6' BELOW THE GROUND.

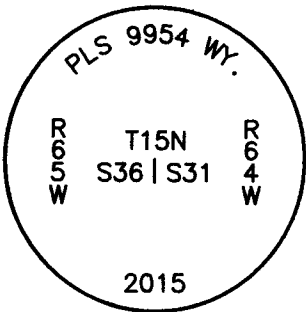
NOTE:
LINES SHOWN ARE BETWEEN MONUMENTS AND MAY OR MAY NOT BE SECTION OR SECTION SUBDIVISION LINES.



SCALE 1"=1000'
(EXCEPT IN TRIVIAL CASES)
BEARINGS ARE RELATED TO WGS 84 WITH GPS OBSERVATIONS
DRAWN BY: SM
P.C. G. WEMER
COUNTY: LARAMIE

CORNER MONUMENT SYMBOLS

- RECORD IS FOR THIS CORNER MONUMENT.
- ▲ A RELATED CORNER OR WC MONUMENT.



THE MONUMENT IS MARKED

Date of Field Work: 01/28/2015 Office Reference: _____

CROSS INDEX DIAGRAM

A	1	2	3	4	5	6	7	8	9	10	11	12	13	14	15	16	17	18	19	20	21	22	23	24	25	A
B																										B
C		6			5				4																	C
D																										D
E																										E
F																										F
G																										G
H																										H
J																										J
K																										K
L																										L
M																										M
N																										N
O																										O
P																										P
Q																										Q
R																										R
S																										S
T																										T
U																										U
V																										V
W																										W
X																										X
Y																										Y
Z																										Z

Firm/Agency, Address

UELS, LLC

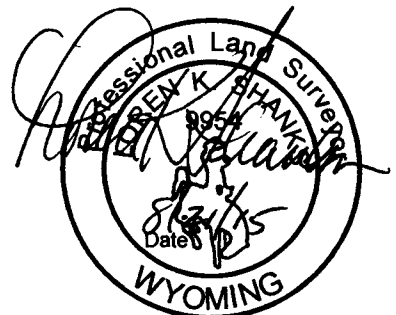
85 South 200 East

Vernal, Utah 84078

Telephone Number: 435-789-1017

This corner record was prepared by me or under my direction and supervision.

SEAL & SIGNATURE



REC# #: 670087

RECORDED 9/22/2015 AT 10:41 AM BK# 2465 PG# 95
Debra K. Lathrop, CLERK OF LARAMIE COUNTY, WY PAGE 1 OF 1

1/4 CORNER OF MAXIMUM CONTROL
Corner Name: WEST 1/4 CORNER OF SECTION 31 Section: 31 T 15N R 64W ; 6TH P.M. Cross Index No.: X-1
SBRPEPLS/PLSW: March 1994 (CLCR...SJA)